

COMPANY PROFILE



AL BURRAQ
Aluminium Works LLC

INDEX

1. About Al Burraq Aluminium	2
1.1 Organization Chart	3
1.2 Trade License	4
2. Our Mission & Philosophy	5-6
3. Production Facility	
3.1 Factory Locations.....	7
3.2 Fabrication facility.....	8-13
3.3 List of Machines	14-15
4. What we do	
3.1 Technical Support and Consultation	16
3.2 Glass Scratch Removal	17
3.3 Aluminium Scratch Removal.....	18
3.4 Value Engineering Solutions	19
3.5 Design & Engineering	20
3.6 Fabrication	21
3.7 Project Management	22
3.8 Site Installation	23
3.9 Proprietary Systems	24
4 Our Products	
4.1 Glazing Systems	25
4.2 Cladding Systems	26
4.3 Doors & Windows	27
4.4 Metal Works	28
4.5 Louvers & Solar Shadings	29
4.6 Pergola, Canopy, Roofing & Decorative Screen	30
4.7 Interior Glazing & Kitchen Cabinets	31-32
5. Quality Policy	33-34
6. HSE Policy.....	35-36
7. Projects Pictures	37-58

INTRODUCTION

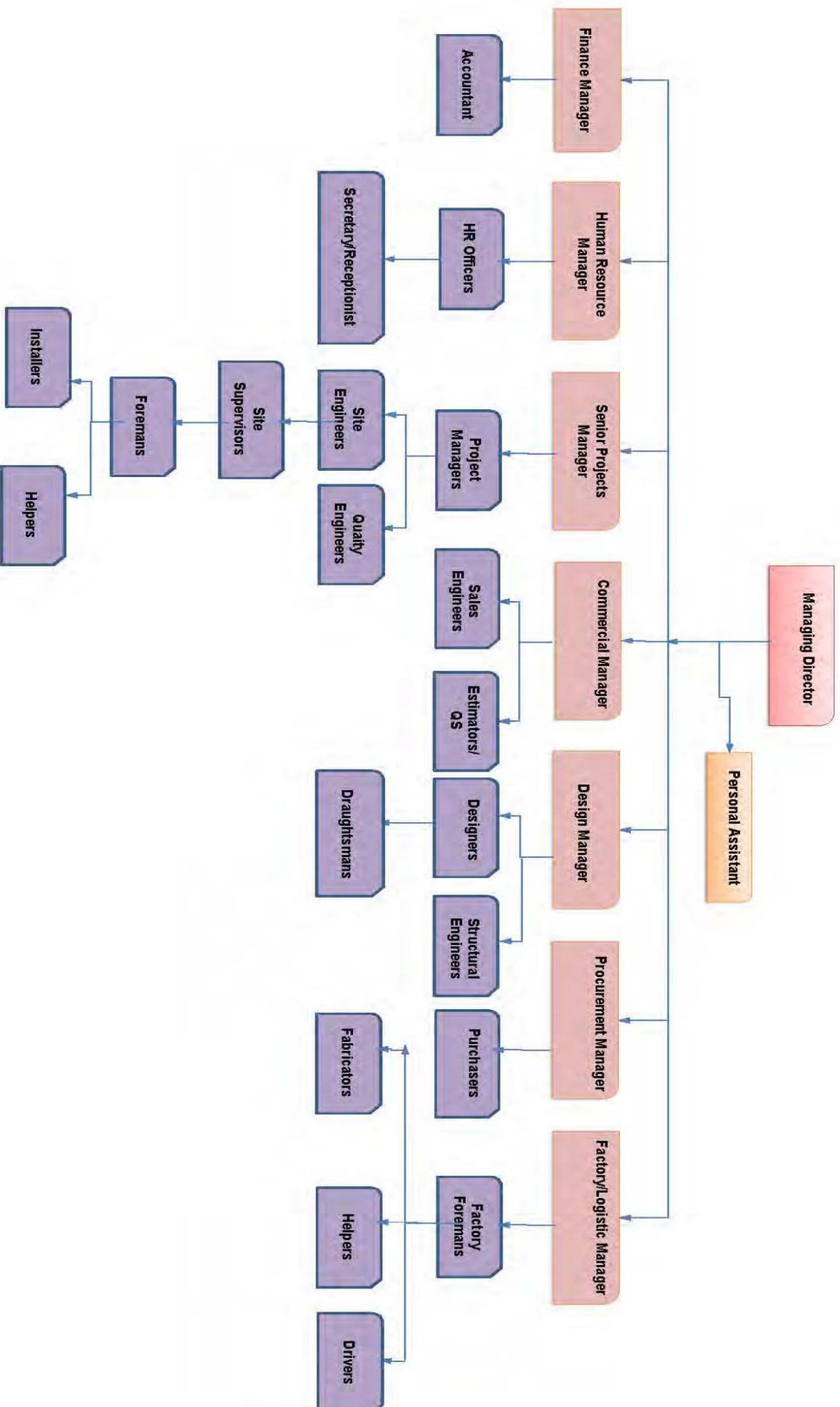
Al Burraq Aluminium Works LLC carries wide expertise in transforming the façade with creative and inspiring Aluminium and glass items windows, curtain walls & cladding etc., crafted out of a variety of Aluminium sections available around the world, in residential villas and buildings, hotels, office and other commercial buildings. Managed by a team of highly educated and quality-conscious persons possessing long experience in requirements analysis, customized production and project management, and backed by sister companies creating waves in every aspect of construction, our clients can feel assured of best possible product delivery that fits well into their needs and budget, both, without having to compromise on quality.

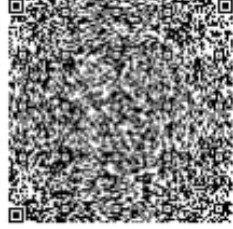
**“You desire quality, we deliver perfection! We Build
TRUST ... Not just Aluminum!”**



AL BURRAQ ALUMINIUM WORKS LLC

Organization Chart





Professional License / رخصة مهنية



License No. **99173** رقم الرخصة

ACC No. **118832** رقم الغرفة

Register No. **201794671** رقم السجل التجاري

License Details	Update License with Renew / تعديل رخصة به / بند تجديد	تفاصيل الرخصة
Trade Name ALBURRAQ ALUMINIUM WORKS - L.L.C		اسم التجاري الواق لأعمال الألمنيوم - ذ.م.م
Legal Form Limited Liability Company		الشكل القانوني شركة ذات مسؤولية محدودة
Expire Date 2021-01-01 تاريخ الانتهاء		Issue Date 2019-01-03 تاريخ الاصدار

Passport / رقم الجواز	Nationality / الجنسية	Manager Name / اسم المدير
P1880029	الهند India	زهير احمد مسعود غلام ZAHEER AHMAD MASOOD ALAM

Activites	الانشطة
Aluminium and Glass Installation Workshop	ورشة لتوكييات الألمنيوم والزجاج

صندوق البريد P.O. Box	تاريخ انتهاء عقد الإيجار Contract Expiry Date	اسم المؤجر / Lessor	العنوان / Address
0		مروان احمد حسين الزوي	شقة رقم 155، الحرف الصناعية 1 Corner No. 155, Jurf Industrial Zone1

ملاحظات

رقم الموظف / Emp No.	تاريخ الايصال / Voucher Date.	رقم الايصال / Voucher No.
	2020-02-13	30109197

تاريخ الطباعة / Print Date 2020-02-16



Approved electronic document issued without signature by the Department of Economic Development. To verify the license kindly visit www.ajmanded.ae

وثيقة الكترونية معتمدة وصادرة بدون توقيع من دائرة التنمية الاقتصادية - عجمان. لمراجعة صحة البيانات الواردة في الرخصة برجاء زيارة الموقع الإلكتروني www.ajmanded.ae

Our Vision and Mission

Our Vision

Strive to consistently raise KTS Group's (and ABA's) stake in the enrichment of UAE's heritage, and its stake in the world economy, focusing on maximizing satisfaction levels of customers, employees and all stakeholders.

Our Mission

The path to realizing ABA's Vision is based on fundamental values of trust, respect, and shared benefits.

AL Burraq Aluminium has clearly enunciated its Corporate Values and uses this charter in its day-to-day conduct of business as governing principles of behavior, attitude and actions. The matrix of values is derived from the following:

Customer Focus:

Ensure that customer expectations and needs are identified and that our products and services meet these needs most effectively.

Integrity

Ensure that there is personal integrity at every level, leading to healthy interpersonal equations and organizational trustworthiness.

Market Leadership

Aim to achieve leadership in business growth and profitability by offering Quality Products and Services that shall be the best in their class.

Technology Leadership

Aim to excel in Technology and Engineering and achieve leadership by offering cost effective technologies for the benefit of customers and industries.

Global Competitiveness

Ensure that our products and services measure up to international benchmarks and thus ensure long term growth for the Company.

Innovation and Improvement

Strive to innovate and excel in everything we do in products, safety, value, services, human relations, competitiveness and profitability.

Human Resource Development

Invest in people as a source of strength to the organization. Foster teamwork and ensure that all employees treat each other with mutual trust and respect.

Social Awareness

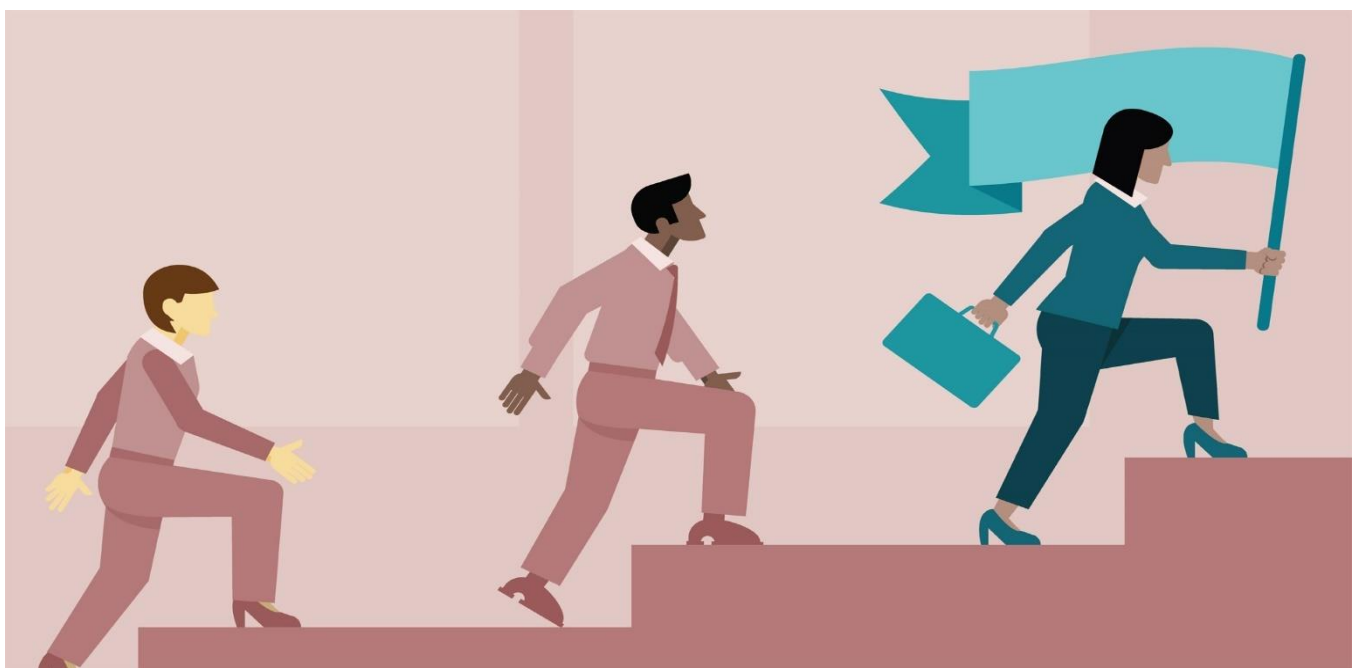
Recognize the obligation to society as an integral part of all business practices and maintain high ethical and social standards in all dealings.

Environmental Protection

Strive to provide a safe and healthy environment and comply with all applicable environmental, health and safety standards, laws and regulations.

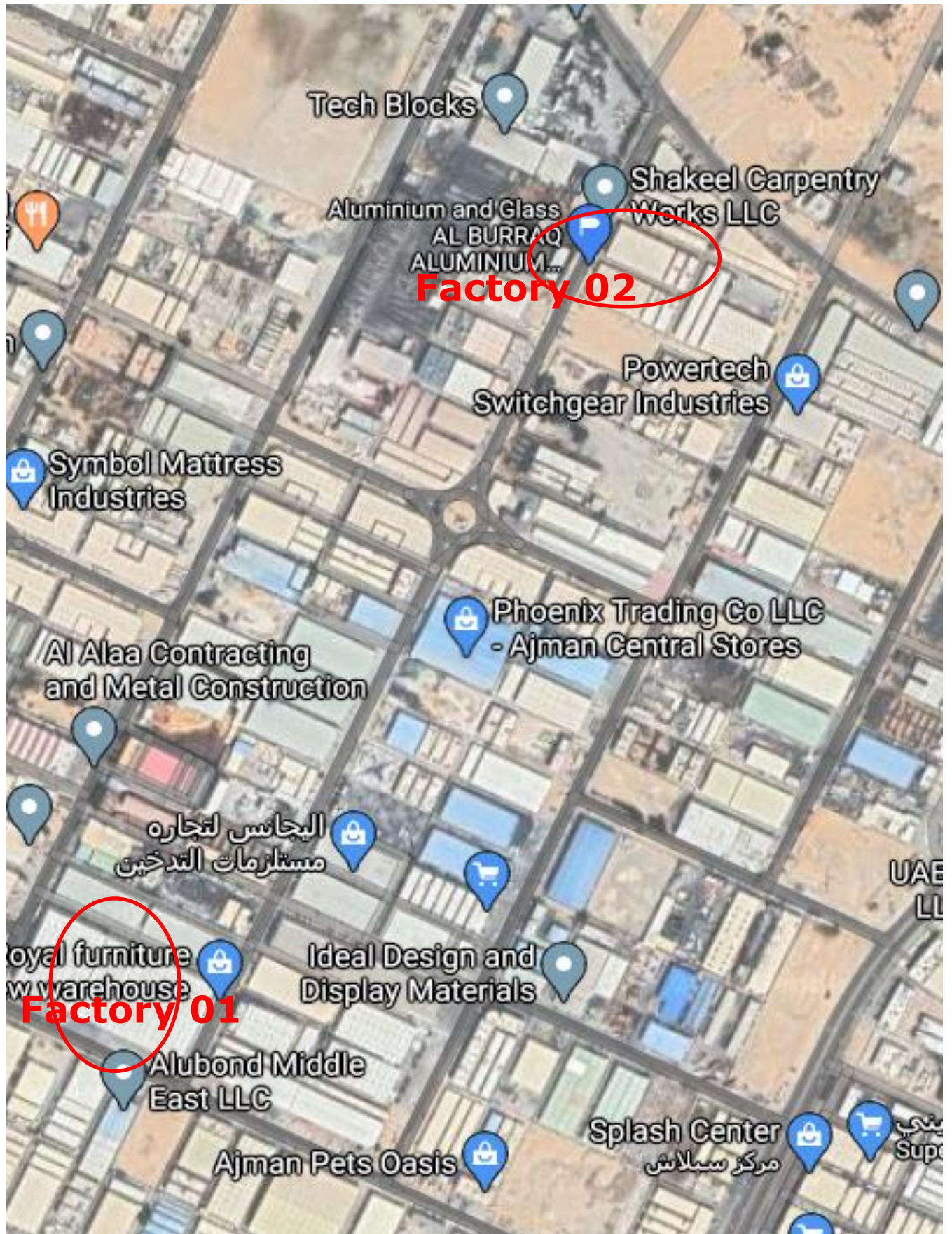
How shall we meet our projected outcomes?

- a. Applied project management skills
- b. Continuous supervision and inspection
- c. Quality management and assurance
- d. Environmental and safety management
- e. Timeous project installation and completion
- f. Continuous communication to all stakeholders
- g. Applied innovation and all round problem solving



PRODUCTION FACILITY

Factory Locations



Fabrication Facility













EQUAPMENT LIST

SL NO	Category	MAKE
1	AIR COMPRESSOR	COMP SIT / FINI
2	AIR DRYER	DONALDSON
3	HEAVY ALUMINIUM CUTTING SAW	THOMAS
4	AUTOMATIC SAW	ELUMATEC
5	BAND SAW	VERTEX
6	BENCH DRILL MACHINE	IXQIN BSS23
7	CASEMENT - BRACHE CENTRE	RUCHSER
8	CLADDING ROUTER MACHINE	ACIMALL
9	CORNER NOTCHING MACHINE	ELUMATEE / ACL
10	CUTT OFF MITER SAW	GRAULE
11	DIGITAL MEASURING SYSTEM	ELUMATEC
12	DOUBLE NOTCHING SAW (CNC)	ELUMATEC
13	DOUBLE NOTCHIN SAW	GRAULE
14	DOUBLE MITER SAW (CNC)	ELUMATEC
15	END MILLING MACHINE	ELUMATEC
16	FOIL COATING MACHING	RUCHSER
17	FORK LIFT	CATERPILLER
18	GASKET FIXING MACHINE	RUCHSER
19	GLAZING BEAD SAW	RUCHSER
20	GLAZING CONTROL PRESS	RUCHSER
21	LATHE MACHINE	PAHTHER
22	MAGENETIC DRILL MACHINE	EBH
23	METAL CUTTING MACHINE	THOMAS
24	MIG WELDING MACHINE	MILLER
25	MILLING MACHINE	HARISSON
26	MOUNTING DEVICE T-BINDER	RUCHSER
27	NOTCHING MACHINE	GRIT
28	PAN BREAK MACHINE	LIENHSEIN
29	PLASMA CUTTING MACHINE	MILLER
30	POLISHING MOTORS	SHERIF ELEET
31	POWER PRESS	RHING
32	PROFILE MACHINE CENTER(CNC)	ELUMATEC
33	PRODILE MACHINE CENTER(CNC)	SATELLITE EMMEGI
34	PUNCHING MACHINE	EDWARDS

35	RADIALARM SAW	DEWALT
36	ROLLER ENDING MACHINE	MG
37	SHEARING MACHINE	HYDRA POWER
38	SHEET BENDING MACHINE	BAYKAL
39	GLASS DRILLING MACHINE	AL HURAH
40	GLASS BEVELLING MACHINE	SAFE
41	GLASS POLISHING MACHINE	AL HURIAH
42	CNC CLASS CUTTING TABLE	
43	RESIGN MACHINE	SHOPBOT / MIMAKAI
44	PLOTTER MACHINE	MIMAKAI
45	CNC MASTER ROUTER	VERNCAZ
46	DIGITAL GROOVING MACHINE	STRIEBIG
47	CNC DOUBLE HEAD CUTTING MACHINE	ELUMATEC/EMMEGI
48	AUTOMATIC SAW CNC MACHINE	ELUMATEC/EMMEGI
49	CNC MACHINING CENTER- 4 AXIS or 5 AXIS	ELUMATEC/EMMEGI
50	COPY ROUTERS	ELUMATEC/EMMEGI
51	END MILLING MACHINE	ELUMATEC/EMMEGI
52	ALUMINIUM CORNER PUNCHING PRESS	ELUMATEC/EMMEGI
53	SINGLE HEAD CUTTING MACHINE	ELUMATEC/EMMEGI
54	SLITTING/SHEARING MACHINE	THOMAS/EMMEGY
55	VERTICAL DRILLING MACHINE	HANKUEN
56	CORNER CRIMPING MACHINE	ELUMATEC/ATLA COOP
57	SHEET SHEARING MACHINE	BAYKAL/OMEGA
58	SHEET BENDING MACHINE	BAYKAL /VOX
59	3 ROLLER ROLLING MACHINE	MG
60	SILICONE EXTRUDER MACHINE (Structural Bonding)	LISEC/REINHARDT TECHNIK
61	VERTICAL CLADDING MACHINE	BALA MAKINA /GMC
62	VERTICAL MASTER ROUTER CNC MACHINE	ALU RANGER
63	CNC GLASS CUTTING TABLE	MAVER
64	WELDING MACHINE	MILLER ELECTRIC .CO
65	AIR SCREW COMPRESSOR	FINI/BOTARANI/ROTAIR
66	PROTECTION TAPE APPLICATION MACHINE	REJINA

WHAT WE DO

Technical Support and Consultation

The design requirement for cutting and machining of extrusions are prepared using CAD/CAM software which is integrated with the factory equipment and directly programmed to carry out all cutting and machining operations. On loading any particular extrusion to the production line, the operation is substantially automated through to completion of the manufacturing sequence.

Structural Engineering Services:

- Complete structural analysis and design including wind load engineering
- Evaluation and testing of materials
- Evaluation of structural integrity of proposed design solutions
- Buckling and stability analysis for façade designs
- Finite element analysis
- Large deflection and membrane stress analysis
- Thermal stress analysis
- Thermal transmission analysis of glazed aluminium façades.

Façade Engineering Services:

The building envelope is a key element in the creation of the built environment. The selected cladding system at the heart of the building fabric (Stick, Unitized, or Double Skin) must perform a number of critical tasks without fail, namely:

- To Filter light
- To Moderate heat
- To Block infiltration of air and water
- To Enhance life cycle cost-benefit to the client

AL Burraq Aluminium provides the following services to the achieve these goals:

- Research, development and design
- Engineering
- Performance testing
- Thermal analysis
- Code and authority compliance.

Our main focus is on practical and buildable solutions which can be efficiently realized by the State-of-the-Art equipment and technology and by our experienced design and production teams.

PROFESSIONAL GLASS RESTORATION (GLASS SCRATCH REMOVAL)

We have Professional Team for glass Restoration services, Glass repair work is highly skilled technical work. The end result always depends on the expertise, experience and craftsmanship of the technician to deliver a high-quality end result as per our client expectation and can save time, money and inconvenience for clients. Our skilled glass restoration technicians will bring your Glass Doors, Windows, Curtain wall, partition etc back to their novel Look, shine and transparency; They will remove deep scratches, mineral deposits, construction debris, cement and concrete splatter, etched graffiti, paint and even acid damage, without effecting your normal daily activities.

The following are considered to be the most common causes of glass surface damage

- Scratches, can be caused by hard or sharp objects either accidentally or maliciously applied
- Graffiti, May be etched into the surface or applied using paint or indelible ink which if removed incorrectly could damage the glass surface
- Air Pollution, Organic or inorganic materials or a combination of the two which may have an abrasive effect on the glass surface causing a drop in visual quality
- Contamination, this could be as a result of building run off or sealant leakage which may have an effect on the glass surface

The process of glass repair involves the abrasive removal of a small amount of the glass surface so as to restore the glass, without impairing the visual quality. In exceptional circumstances an unacceptable level of distortion may only become evident during or after treatment. In these instances, replacement would generally be advised.

ALUMINIUM FRAME TOUCHUP & PAINTING

We have Professional Team for Aluminium Restoration services, Aluminium Scratch repair work is highly skilled technical work. The end result always depends on the expertise, experience and craftsmanship of the technician to deliver a high-quality end result as per our client expectation and can save time, money and inconvenience for clients. Our skilled Aluminium restoration technicians will bring your Aluminium Doors, Windows, Curtain wall, partition etc back to their novel Look & shine; They will remove deep scratches, mineral deposits, construction debris, cement and concrete splatter, etched graffiti, paint and even acid damage, without effecting your normal daily activities.

- Scratches on Aluminium During Construction
- Scratch on Aluminium in Existing Building

This is Will save our Client,

- Cost
- Time
- In-convenience



VALUE ENGINEERING SOLUTIONS

A building façade is affected by the environment as well as the physical performances of the building-materials at every stage of the building's life cycle. A process for the selection of optimal façade materials is needed, with a particular consideration of durability, as well as the functional and economic performances of the materials. The Facade Envelope makes a major contribution to the sustainability of a building, influencing both energy efficiency and the quality of the internal climate. It is also an integral part of the building's aesthetic, complementing the structural form and defining its visual impact on the urban environment.

Our value engineering strategy having three simple parameters as follows,

1. Business Model & Corporate Strategy
2. Integrated Design & Delivery
3. Design Collaboration

Key aspects of our value engineering strategy include:

- Performance led design. Delivering facades that do what is required of them.
- Excellence in design.
- Risk Control.
- Driving cost out.
- Continuity in manufacturing and installation.
- Attention to quality as the project becomes a physical reality.
- Verifying performance.
- Cladding performance.
- Troubleshooting.

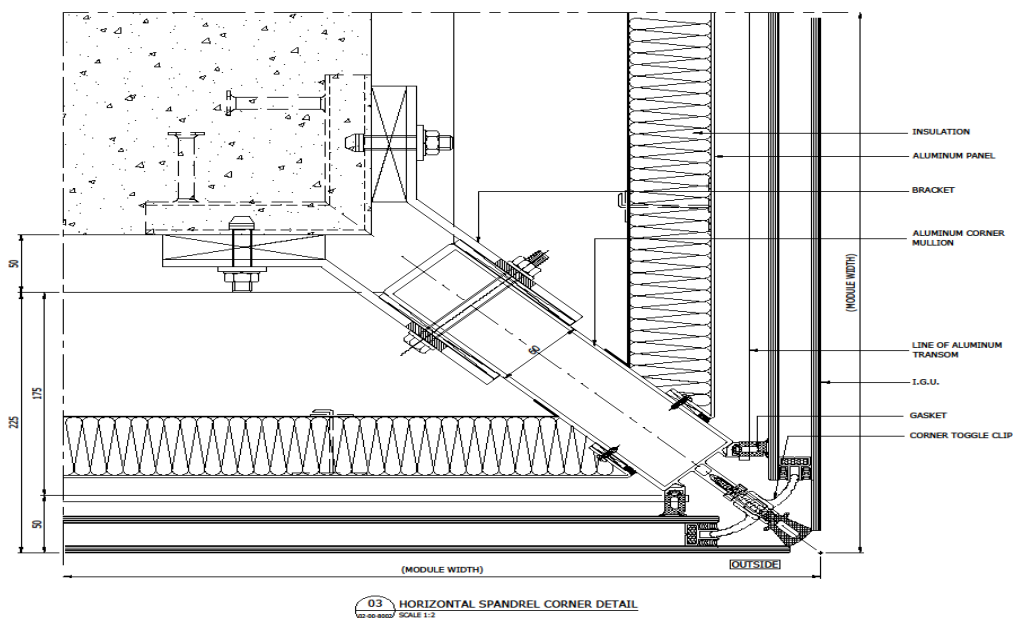


DESIGN & ENGINEERING

We are well recognized for our design expertise and technical capabilities in translating innovative architectural concepts into practical design solutions, feasible in both technical and economic terms.

The design process begins with design workshops. These workshops involve interaction with our clients, designers and architects to ensure we deliver a product which fully satisfies customers' expectations in terms of applicable quality standards and design intent. We also explore Value Engineering options to address potential budget constraints and arrive at an optimal design solution. The Design and Engineering process is fundamental to the success of the project and our dedicated teams are well versed in all aspects of the process including:

- Design workshops with Client and Architects (including discussion of Value Engineering Options)
- Understanding Design Specifications and Building Codes - PEARL, Estidama, Green Building Codes, etc.
- Preparation and approval of Shop drawings and Engineering Calculations
- Preparation of visual mock-ups for client approval and 3rd party testing
- Construction of Curtain Wall Test Rigs for independent testing against Prescribed Performance Criteria
- 3D Modelling (Solid Works and Inverter software)
- Preparation Fabrication drawings and Step Files for automated machining
- Preparation of As-built Drawings



FABRICATION

AL Burraq Aluminium works LLC is designed to take full advantage of modern production techniques to ensure highest levels of accuracy combined with high outputs at optimum cost. All design-work is generated in-house and all installation-works are handled by us. The detailed integration of personnel and plant is a guarantee of Al Burraq capacity to deliver even the most complex orders in a timely and efficient manner and to the standards specified by the Client.

Hard work and the dedication of our team have earned us a reputation for:



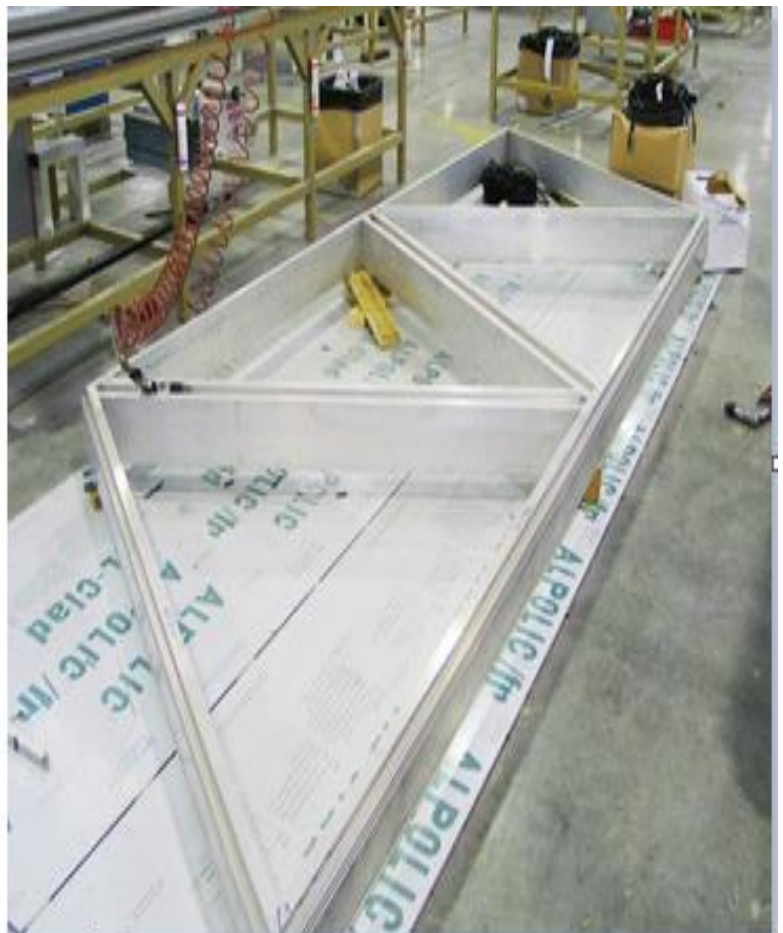
Quality Fabrication



Timely Delivery



Precision Machining



Project Management

All projects have a dedicated Project Manager & Project Management team involved from the initial design phase through to final handover. Liaising directly with the client throughout the project, they are ultimately responsible for managing each stage of the project

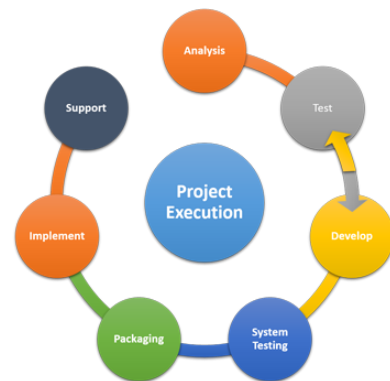
Planning:

- a. Method Statements
- b. Man-hour Planning
- c. Project Team Requirement
- d. Access system Requirement
- e. Quality Plan
- f. Safety Plan



Executing:

- a. Procurement & Fabrication
- b. Quality & Safety Management
- c. Project Resourcing
- d. Site Surveys
- e. Site Management & Supervision
- f. Variations & Site Instructions



Controlling:

- a. Project Reporting
- b. Quality Reports
- c. Program Management



Closing:

- a. Testing and Commissioning
- b. Snagging and De-snagging
- c. Operations & Maintenance Manual
- d. As-Built Drawings
- e. Final Handover

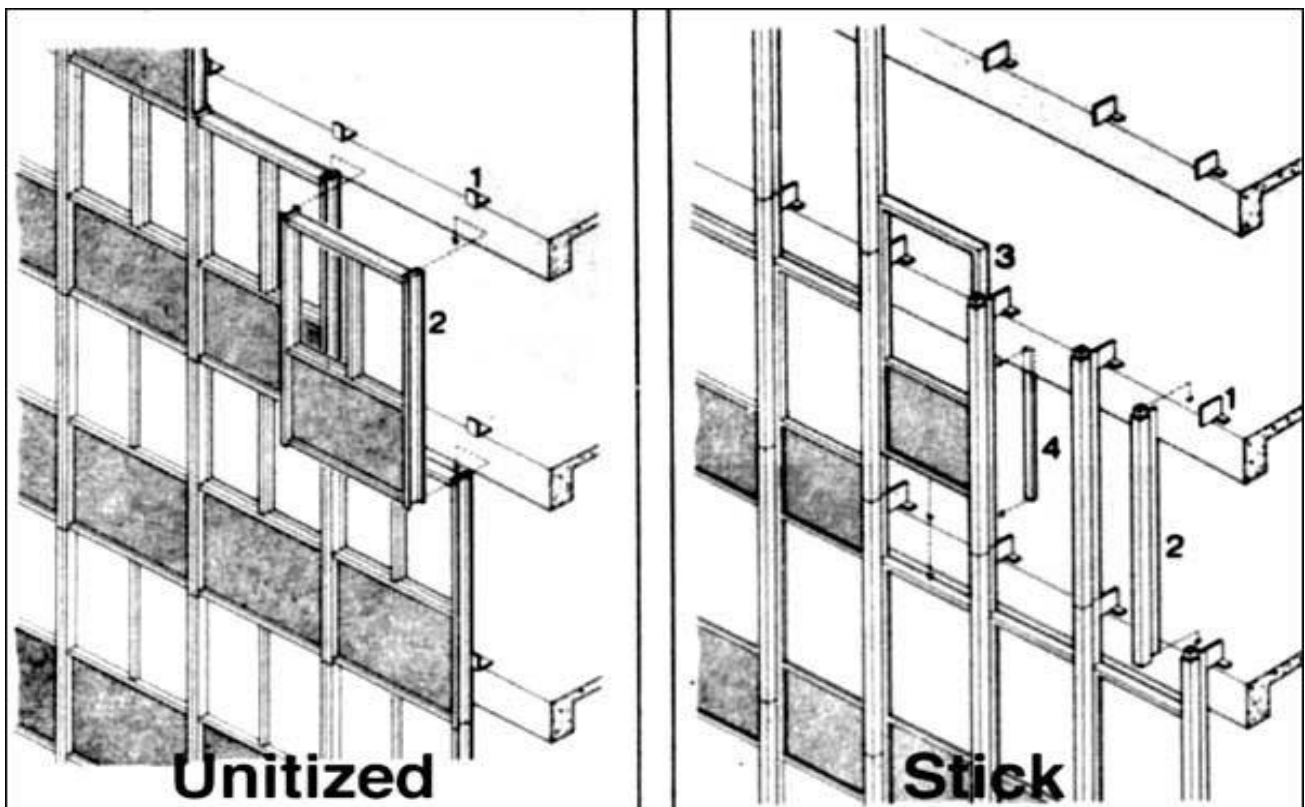
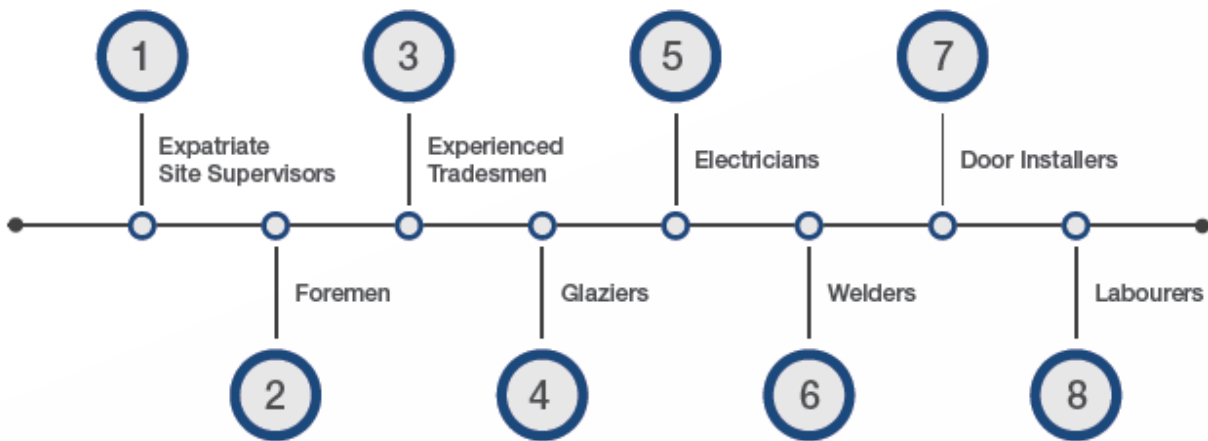


Site Installation

Flexible resourcing enables us to mobilize additional manpower at short notice to cater for project needs. ABA has access to a full complement of Transport, Lifting and Access Equipment to enable efficient and effective site installation.

We are proud of our workmanship and have earned a reputation for quality installation, to the extent that we have been brought in to finish other contractors work to an acceptable standard on multiple occasions.

We have highly skilled and experienced Site Installation Team comprising:



Proprietary Systems

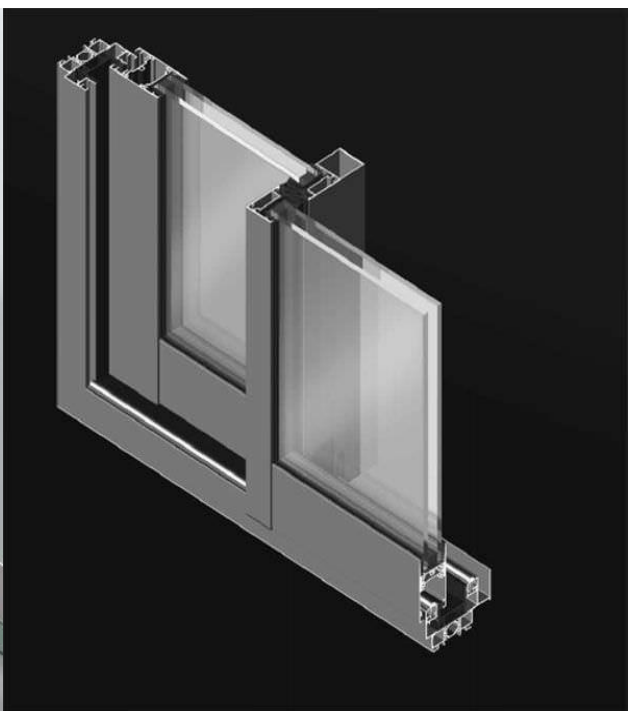
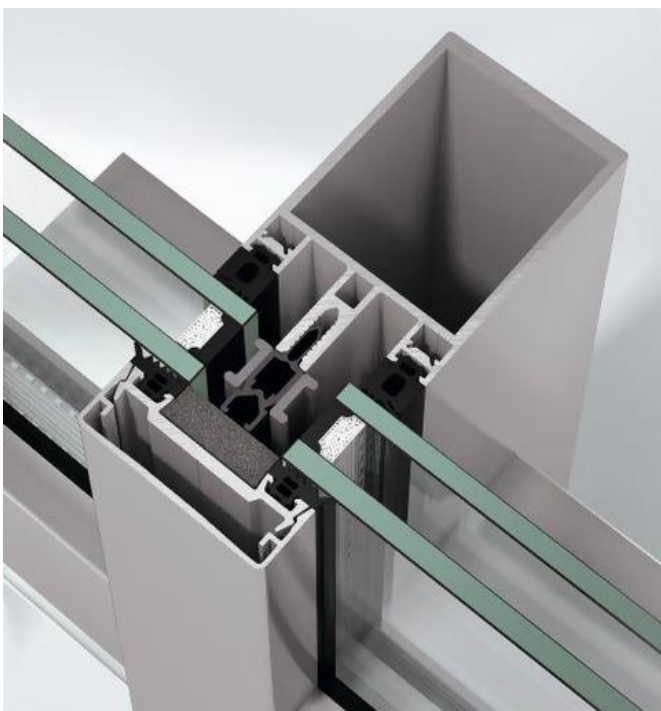
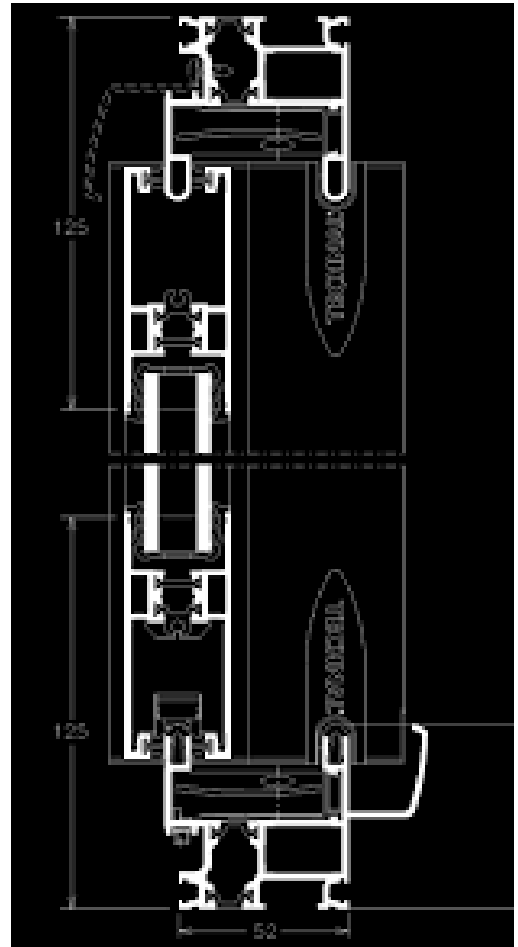
Our team is specialized in followings proprietary Aluminum system,

1. International Aluminium Systems:

- a. Schuco Aluminium System
- b. Technal Aluminium System
- c. Gutmann Aluminium System
- d. Vistawall Aluminium System
- e. Hueck Aluminium System
- f. Alumil Aluminium System
- g. Wicona Aluminium System
- h. Aluk Aluminium System

2. Local Aluminium Systems

- a. Gulf Extrusion Aluminium System
- b. Emirates Extrusion Aluminium System
- c. Alupco Aluminium System
- d. NAPCO
- e. BALEXCO



Our Products

We supply and install a broad range of façade and related products which include

Glazing Systems

1. Curtain wall – Stick System

- a. Conventional Stick Curtain wall system
- b. 4 Side Structural Glazed Stick Curtain wall System
- c. 2 Side Structural Glazed Stick Curtain wall System

2. Curtain wall – Point Fix Glazing

- a. Spider System
- b. Glass Fin System
- c. Cable Net System
- d. Patch Fitting System

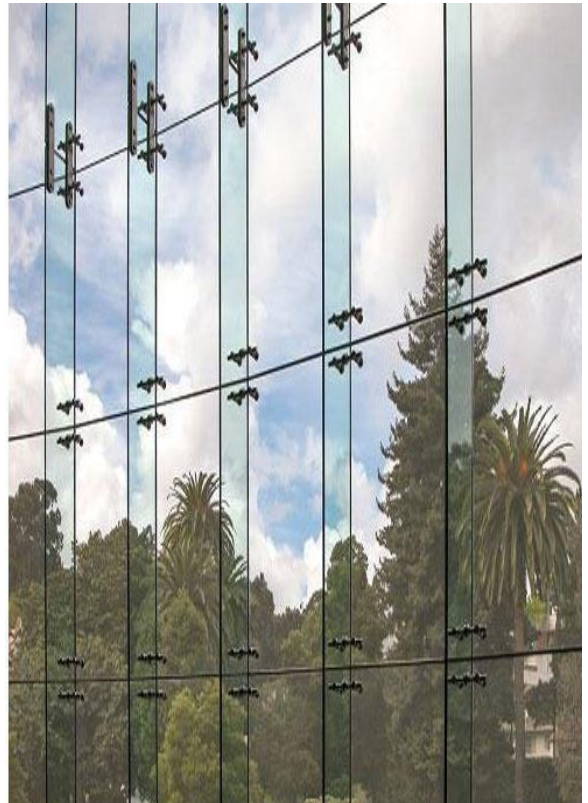
3. Curtain wall – Add-on System

4. Glass Cladding

5. Glass Partitions

6. Sloped glazing and sky lights

7. Glass Canopy



Cladding System

Al Burraq Aluminum source their requirements for composite panels from a variety of highly reputable international suppliers including but not limited to ACP Cladding, Solid Sheet Cladding, Fire Rated Cladding, Curved Panels Cladding, Perforated Panels, Stainless Steel Cladding etc and are thus able to meet architectural and engineering specifications at every level of cost and performance.

Aluminium composite panels are a superior alternative to solid aluminium sheets and offer a superb combination of light weight, rigidity, flatness, attractive appearance and durability. To strive at the highest level to achieve on behalf of our customers

Craftsmanship

- Durability
- Beauty
- Value-for-Money

OUR CLADDING INSTALLATION TEAM IS WELL EXPERIENCED IN:

Wet Sealant Joint Method

This method is widely used in a large variety of cladding applications. The panels are folded at the edges to form a tray-configuration. Following mechanical attachment to the sub-structure, the joints are filled with an expanded polyethylene backer-rod to support the correct thickness of the structural silicone weather-seal.

Hanging Method

This is also a popular fixing method which allows for easy and quick installation. The joints are interlocking and there is no need for external weathering sealant. The open joints are self-draining and the system can accommodate differential movement in the sub-structure.

Narrow Open Joint Method

This method is recommended for fixing of stone or timber patterned panels since the narrow joint presents a more aesthetic appearance. Joints can be sealed with structural silicone or with EPDM gaskets.

Roofing Application

Aluminum composite panels are extensively used to clad the roofs of airports, stadiums and commercial buildings where it is necessary to combine elegance and durability.

Curtain wall Spandrel Areas

Folded, or flat aluminum panels containing a bonded insulation material (eg. expanded polyethylene) are generally required to be installed in the space between the glazed spandrel and the edge of the concrete slab. The outer face of the aluminum sheet is usually painted with a dark polyester powder coat finish to ensure that there is no risk of "Read- Through" of the back-pan when viewed from the exterior.

Doors & Windows

Aluminium Doors in which the frame is constructed of aluminium instead of vinyl, wood or other materials. Besides used in residential dwellings, they're commonly seen in industrial and commercial structure.

Our Standard Product Range for Doors is as follows,

- a. Swing Door
- b. Sliding Door
- c. Folding Door
- d. Revolving Door
- e. Hinge Door
- f. Lift & Slide Door
- g. Sliding Folding Door
- h. Automatic Sliding Door
- i. Automatic Revolving Door

Aluminium windows in which the frame is constructed of aluminium instead of vinyl, wood or other materials. Besides used in residential dwellings, they're commonly seen in industrial and commercial structures

Our Standard Product Range for Windows is as follows,

- a. Sliding Window
- b. Hinge Window
- c. Top Hung Window
- d. Bottom Hung Window
- e. Pivot Windows
- f. Tilt & Turn Windows
- g. Arch Window
- h. Projected Windows
- i. Parallel Opening Window

Aluminium Doors & windows Benefits:

- a. Better noise control: That's why they're the top choice for hospitals and schools.
- b. Moisture resistant: this quality makes them a good choice if you live in a rainy or damp area.
- c. Economical: they're not as expensive as other windows and are one of the cheapest ones to manufacture.
- d. Low maintenance: They don't require much upkeep.
- e. Durability: Aluminium windows are exceptionally strong.
- f. Lightweight: These windows are lighter than most other types.
- g. Color Options: you will get a range of colored aluminium doors and aluminium windows to choose from. This will also enable you to opt for a color that matches the color scheme of your house.
- h. Less Maintenance:
- i. Eco-Friendly:

Metal Works

Al Burraq Aluminium strives to provide our clients with comprehensive answers to their metal fabrication needs. Our vertically integrated business structure, including design, development and processing capabilities, allows us to meet all your construction requirements. The Aluminium, Metals Cladding offers a full range of services including the very best in customer care. No project is beyond our capacity and we can respond to any challenge.

The company's skilled craftsmen are capable of producing highest standard of quality. Using the latest technologies and techniques, they ensure that our products continue to enjoy a reputation for excellence. Line managers and quality control officials carefully check every step of the production process,

Your products arrive in perfect condition. Installation professionals are available to assemble them as per project requirement.

Expert teams of engineers and consultants can enhance your project with unique integrated solutions through value assessments and site management. Competitive pricing and built-in cost savings will ensure the success of your venture in both the short and long term.

Standard Product Range (Metal Fabrication):

Monumental Stairs: Monumental stairs are custom fabricated to almost any design concept. Customary finishes are Stainless Steel, Painted Steel and all the various finishes of each.

Spiral Hand Rails: Stairs may be covered by many materials, like Stainless Steel, and Aluminum. It is done in our plant under Controlled Environment as part of manufacturing true Architectural metals.

Architectural Specialties: Al Burraq Aluminum Company is called upon to fabricate a unique-Architectural Master Piece.

Railings: Our Team is Expert in Any type railings including staircase & Balcony

Stair Furnished Complete: AL Burraq Aluminum Company furnishes the entire stairs system complete so you can avoid the gamble of dealing with multiple crafts.



Louvers & Solar Shadings

LOUVERS: Louvre panel systems are popular with designers for many applications in industrial and commercial buildings. Their purpose can be to control light entry, to provide ventilation whilst maintaining rain defense, to provide screening, or a combination of these. Louvres can also be provided simply for aesthetic impact.

Our louvre systems are highly adaptable. They are available in various configurations, materials, finishes and coatings to meet the requirements of almost any project. Besides louvre panels being available in aluminium, there are all manner of glass, textile, wood, terracotta clay and translucent acrylic louvres available depending upon the aesthetic and energetic requirements.

Some of Louvers are as follows,

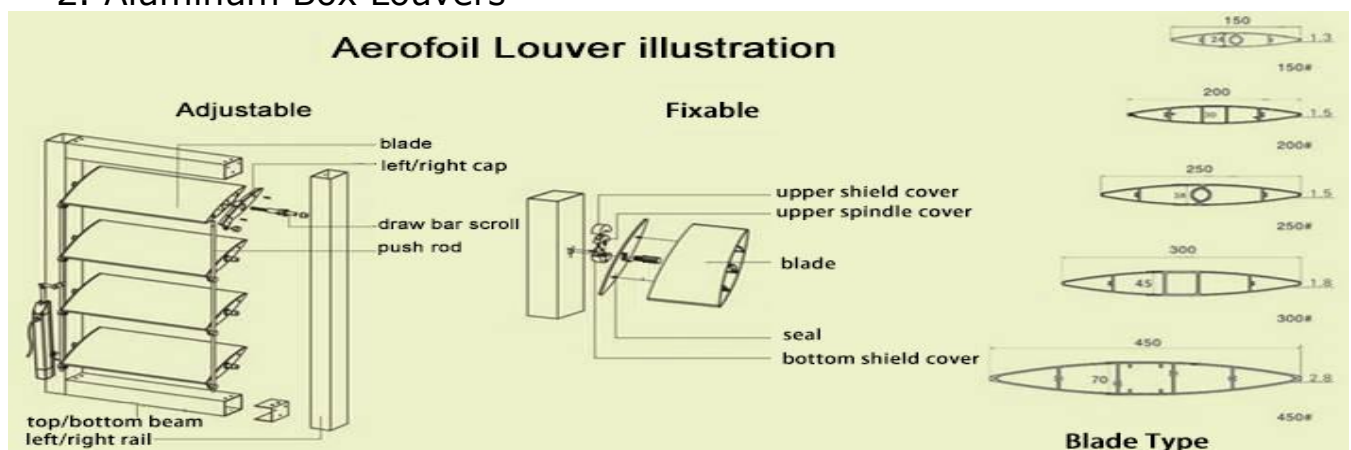
1. Z Type Architectural Louvers
2. Sand trap Louvers
3. Acoustic Louvers
4. Drainable Blade Louvers
5. Storm Resistant Louvers

Solar Shading: When we sit inside a building, we all recognise the benefits of natural daylight entering through the window. We respond better when we can have a view to the outside and work better under controlled natural daylight conditions. Furthermore, Architects naturally like to create buildings that evoke interest and admiration. Accordingly, there are examples of buildings with large areas of glazing that can be seen nearly everywhere.

Careful selection of the most appropriate solar shading system is necessary in order to achieve the necessary functional performance and to meet the aesthetic requirements of the building.

Some of the Standard Product for Solar Shading are as follows,

1. Aerfoil Louvers
2. Aluminum Box Louvers



Pergola, Canopy, Roofing & Decorative Screens

Pergola: We are specialized in pergola, that is a garden feature forming a shaded walkway, passageway, or sitting area of vertical posts or pillars that usually support cross-beams and a sturdy open lattice. As a type of gazebo, it may also be an extension of a building or serve as protection for an open terrace or a link between pavilions.

Canopy: Our Team is Specialized in different types of canopy, which is an overhead roof or else a structure over which Aluminum Composite Cladding, Solid Sheet Cladding, Glass and any type of covering is attached, able to provide shade or shelter from weather conditions such as sun, hail, snow and rain. Canopy is also being for Architectural feature in entrance and other areas.

Roofing: We are a full-service Roofing and Exterior Contractor, we offer commercial and residential roofing solutions, siding, Decks and any type of external application.

Decorative Screens: There are different types of decorative screens are part of our product range such as Perforated Sheet Mashrabiya, Cast Aluminium Decorative Screen, Aluminium Profile Decorative screens etc.



Interior Glazing & Kitchen Cabinets

We have the infrastructure and technical capabilities to undertake turnkey projects in large volume. Projects are being managed by experienced engineer and supervisors along with the strong skilled force in civil experts, Skilled Carpenters, Gypsum work, POP, Soft furnishing, electrical, Flooring, Painting and Fabrication. Using the finest material and superior workmanship to create work and living space that enhance the quality of life. We also have a fully equipped mechanized workshop with all other amenities.

Glass Partitions & Frameless Doors: We manufacture, supply and install all kinds of glass partitions for commercial and residential use purposes, with wide range of doors to complement our partitioning portfolio, such as swing frameless glass door, automatic sliding door or frameless hinged door.

Glass Staircase: Our factory supplies and install all shapes stainless steel staircase skeletons with toughened glass in plain, etched or colour designed, beside tempered laminated floor tiles glass, for offices, showrooms or residential villas.

Glass Table Top & Counters: Glass tables & counters for houses & offices with wooden or stainless steel bases or without, are distinct pieces of art, with different kinds of edge polish & top design.

Mirrors: We are manufacturing all kinds of mirrors with different sizes, shapes and thickness to meet all your requirements (Commercial & Residential). We are decorating mirrors with so many kinds of designs like Sand Blasting, Acid Etching, Air Brushed Painting, Beveled Sides & etc to suite all those which framed & frameless. Also mirrors are available in different colours like Silver, Golden, Blue, Antique & etc.

Sand Blasted Glass: Sand blasting is the operation of carving the glass surface to get gradual or shading effect, also there is a deep sand blasting by deep carving to achieve three dimensional effect.

Stained Glass: Leaded Stained glass by using traditional & modern methods for doors, windows, arches, ceilings, domes & etc. It's mostly depending on skillfulness of the technicians & designers. Today it's possible to order it at any size, shape or colour to suit any mood in Villa's, Apartments, Offices, Palaces & Hotels.

Kitchen Cabinets: Aluminium kitchen cabinet is a great choice for your kitchen if you have (or are planning for) a contemporary interior design for your home.

Advantages of Aluminum Kitchen Cabinets:

Economical and Long Lasting: Aluminium kitchen cabinets are relatively more resilient, as they do not warp or break like the wooden cabinets. This makes them long lasting and eliminates the need for you to do any replacement for a long time.

Ease of Care and Maintenance: The aluminium kitchen cabinets do not need much care. You can easily just wipe off any dirt and dust with a damp cloth, unlike wooden kitchen cabinets which require extra cleaning substances like household detergent or soda powder solution.

Suitable for The Hot and Humid Climate: Aluminum kitchen cabinets can withstand the hot and humid weather in Singapore, unlike commonly used wooden kitchen cabinet which will warp over time and in erratic climate change.

Versatile Colors and Designs: Despite the common misconception that aluminium kitchen cabinets only come in boring metallic look, you actually have the choice to get your aluminium cabinets in a variety of customized colors and designs to match your overall interior design and your quartz or solid surface kitchen countertop.

Water Proof: This is a big plus for aluminium kitchen cabinets compared to the common wooden ones. Because any spills will just stay on the surface and can be cleaned with an easy wipe-off. So you do not have to worry about the spills getting soaked up and damaging the cabinets like the wooden ones.

Rust Resistant: The aluminium kitchen cabinets have an oxidized finish to prevent rust.

Ease of Remodeling: With the sleek aluminium kitchen cabinets, you can change your countertop during remodeling without affecting the overall kitchen design.

Re-Usable for Reinstallation: The aluminium kitchen cabinets can be easily dismantled and re-assembled if you wish to re-use them when you move to a new home. This is definitely a big plus that saves a lot of money for you.

Insect Proof: Another big plus of aluminium kitchen cabinets is that they are not prone to insect infestation because of their non-porous and waterproof nature. This will certainly give you a greater peace of mind.

Quality Assurance Policy: Build Right, Build Fast

Al Burraq Aluminium Works LLC is committed to supplying services of consistent quality that conform fully with statutory requirements and meet our client's documented and implied expectations in terms of technical, budget, quality, and time. Making the best possible application of knowledge, processes, skills, tools, and techniques, we strive to make a significant impact on project success – a success which is shared with all the project stakeholders. We focus on (a) Conformance to requirements: The project's processes and products meet written specifications, and (b) Fitness for use: The deliverables can be used as they were intended, serving the user's needs in the best possible way.

The principal quality aims of Al Burraq Aluminium Works are:

- To have a real understanding of client's needs that align with their business requirements.
- To strengthen relationships and encourage repeat business with existing clients.
- To win projects not solely on price but through innovation and added value.
- To continually strive to improve our performance through analysis and continuous improvement of business processes.
- To develop staff potential through appropriate training in project management quality systems, e.g. PMBOK, ISO 9001, ISO 10006:2003, ISO 10007:2003, and ISO 31000:2009.
- To engender a positive commitment to quality and create an environment of teamwork and cooperation that enables staff to work effectively.
- To support staff in their day-to-day work by developing an accredited management system that links all business activities within the organisation and is documented to meet the requirements of BS EN ISO 9001:2008.

Management will communicate this policy to all employees and staff in such a way that it is properly understood and followed.

Our quality policy has been formulated to serve as a reference base for the policy and procedures for Quality Assurance and controls within the Company. The Quality Assurance system is designed to ensure the execution & maintenance of product quality & standards through the provision of evaluation and verification of processes at all stages of construction supply and installation works are thoroughly maintained. Compliance with the provisions and objectives of this policy is mandatory on all company personnel.

We are committed to execute works Contracts in a manner which will meet or exceed customer requirements. Our policy is based on the founding principle that there is no substitute for quality and we must at all times go the extra length to ensure quality in everything we do. These are reflected in our endeavor in providing our clients adequate resources, use of efficient and economical methods complying with relevant codes, specifications and standards and strive for continuous improvement of the effectiveness of the Quality Management System.



Health, Safety and Environment (HSE) Policy

Al Burraq Aluminium Works LLC and Khushboo Technical Services LLC (Dubai Based sister concern) are committed to the safety of employees, contractors and the general public. We recognize that providing and integrating a sound environmental, health and safety program into our business is key to our success.

It is our policy to:

- Comply with all pertinent environmental and safety laws, rules and regulations, not just because it is legally required, but also because we believe it is the responsible way to conduct our business;
- Set HSE targets and goals annually to measure our performance, to achieve superior results and to continually improve;
- Monitor, revise and reemploy safety systems and environmental assessments on a regular basis;
- Provide education and training to our employees in order for them to have the knowledge, skills, and understanding to perform their responsibilities and duties at the highest level;
- Routinely review and verify performance with audits, evaluations and other quality assurance and quality control methods;
- Empower and expect employees and contractors to promptly report noncompliance or unsafe conditions and to take immediate action to prevent injuries or environmental accidents;
- Provide relevant safety and health information to contractors and require them to provide proper training for the safe, environmentally sound performance of their work; and
- Communicate our commitment to this policy to our subsidiaries, affiliates and contractors and seek their support.



- As a condition of employment, all employees are required to comply with all safety- and environmental-related rules and regulations. Each employee understands that they are individually responsible for their own safety and the safety of those around them.
- Apply our technical skills to all HSE aspects in the design and engineering of our services and products.
- Communicate openly with stakeholders and ensure understanding of our QHSE policies, standards, programs and performance.

Reward outstanding QHSE performance; Improve our performance on issues relevant to our stakeholders that are of global concern and on which we can have an impact, and share with them our knowledge of successful QHSE programs and initiatives.

This Policy shall be regularly review well to ensure ongoing suitability. The commitments listed are in addition to our basic obligation to comply with KTS group standards, as well as all applicable laws and regulations where we operate. This is critical to our business success because it allows us to systematically minimize all losses and adds value for all our stakeholders.



Projects Pictures

Park Vista B+G+4+Roof Residential Building @ JVC Dubai



The Waves, Dubai, U.A.E



PROJECT REFERENCE
ALUMINIUM & GLASS CLADDING

Holiday Inn, Abu Dhabi, U.A.E



PROJECT REFERENCE
ALUMINIUM & GLASS CLADDING

Dubai Real Estate, Dubai, U.A.E



PROJECT REFERENCE
ALUMINIUM & GLASS CLADDING

Nasar Tower, Sharjah, U.A.E



PROJECT REFERENCE
ALUMINIUM & GLASS CLADDING

Sharjah International Airport, U.A.E



PROJECT REFERENCE
ALUMINIUM & GLASS CLADDING

Fortune Tower, Dubai, U.A.E



PROJECT REFERENCE
ALUMINIUM & GLASS CLADDING

Falcon Tower, Ajman, U.A.E



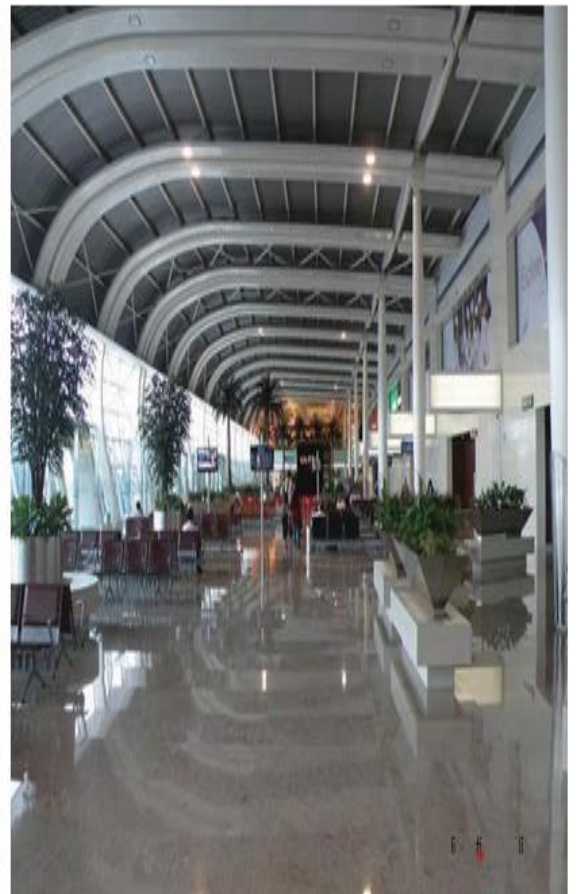
PROJECT REFERENCE
ALUMINIUM & GLASS CLADDING

ADB Bank Project, Abidjan, Africa



PROJECT REFERENCE
ALUMINIUM & GLASS CLADDING

CHATRAPATI SHIVAJI TERMINAL, MUMBAI, INDIA



PROJECT REFERENCE
ALUMINIUM & GLASS CLADDING

BUSINESS, EDUCATION, ACCELERATION CENTER
EDUCATIONAL BUILDING, OLOMOUC, CZECH REPUBLIC



PROJECT REFERENCE
ALUMINIUM & GLASS CLADDING

CONTINENTAL
AUTOMOTIVE, ROMANIA



DUMANKAYA MIX - ISTANBUL, TURKEY



PROJECT REFERENCE
ALUMINIUM & GLASS CLADDING

RED STRIPE OFFICE BUILDING, SERBIA



PROJECT REFERENCE
ALUMINIUM & GLASS CLADDING

QIPCO TOWER, QATAR



PROJECT REFERENCE
ALUMINIUM & GLASS CLADDING

RICH REIT Tower Business Bay, Dubai



PROJECT REFERENCE
ALUMINIUM & GLASS CLADDING



PROJECT REFERENCE
ALUMINIUM & GLASS CLADDING

ALUMINIUM & GLASS CLADDING

PROJECT NAME
MERAJ COMPLEX

Location: QESHMISLAND,
IRAN



PROJECT NAME
BARON HOTEL

Location: KARBALA, IRAQ



PROJECT NAME
TOPISLAND

Location: QESHMISLAND,
IRAN



PROJECT NAME
PNSC BUILDING

Location: KARACHI,
PAKISTAN



PROJECT REFERENCE
ALUMINIUM & GLASS CLADDING

ALUMINIUM & GLASS CLADDING

PROJECT NAME
SEIDCO

Location: DUBAI, UAE



PROJECT NAME
LIBERTY TOWERS

Location: DUBAI, UAE



PROJECT NAME
MAJESTINE HOTEL

Location: DUBAI, UAE



PROJECT NAME
COLOMBO CITY
CENTER

Location: COLOMBO,
SRI LANKA



PROJECT REFERENCE
ALUMINIUM & GLASS CLADDING

ALUMINIUM & GLASS CLADDING



PROJECT NAME
ADB BANK

Location: ABIDIAN,
IVORY COAST

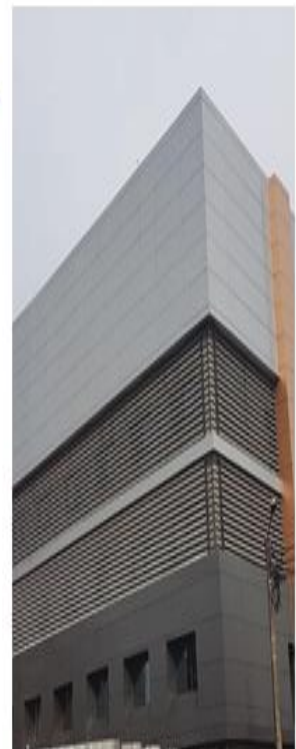
PROJECT NAME
JAGUARLANDROVER
SHOWROOM

Location: ALGIERS,
ALGERIA



PROJECT NAME
FARHA POLYCLINIQUE

Location: ABIDIAN,
IVORY COAST



Samra Villa, B+G+1 Floor Villa and Service Block @ Dubai Hills



G+1 Villa + Majlis Block + Service Block in Al Mizhar (262-1532)

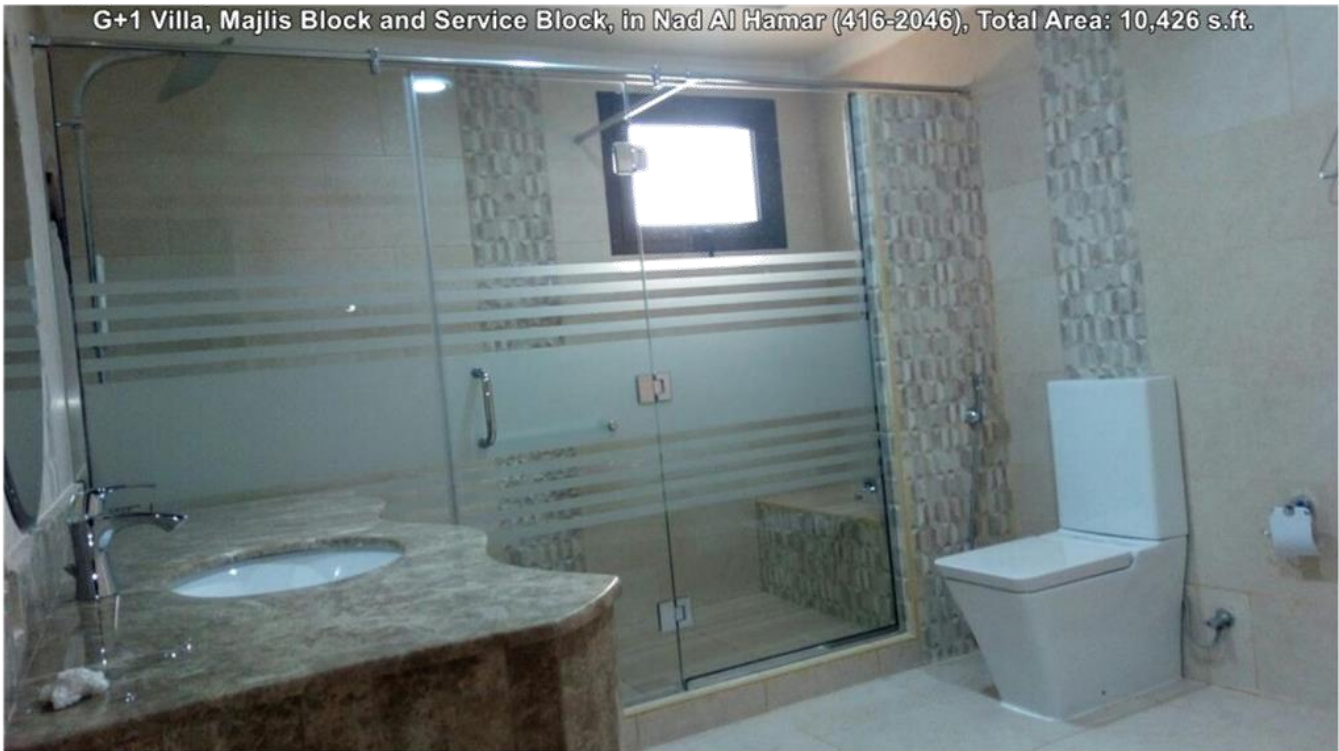


Al Tawar 3rd G+1 Villa Extension (Plot # 2280429), after completion





G+1 Villa, Majlis Block and Service Block
in Nad Al Hamar, Plot 416-2046, Total B.U. Area: 10,426 s.ft.



G+1 Villa, Majlis Block and Service Block, in Nad Al Hamar (416-2046), Total Area: 10,426 s.ft.



©+1 Villa, Majlis Block and Service Block, in Nad Al Hamar (416-2046), Total Area: 10,426 s.ft.

G+1 Villa, Majlis Block and Service Block, in Nad Al Hamar (416-2046), Total Area: 10,426 s.ft.



Barsha South G+1 Villa + Driver Block (Plot # 6720605), after completion



**G+1 Villa on Plot 648-7366, in The Villa (Dubai Land)
Consultant: Renaissance Engineering Consultants
Total Built-Up Area: 4,861 Sq. Ft.**





G+1 Villa, Majlis Block and Service Block, in Nad Al Hamar (416-2046), Total Area: 10,426 s.ft.

Aluminium Pergola and Balcony Railing





INSPIRING VANITY COUNTERS







GET IN TOUCH



Dubai Office:
402, Bin Soughat Building,
Salahaddin Street, near Reef Mall

Ajman Office:
Al Jurf industrial area, shed no. 10,
Ajman.



+971 52 970 8283
+971 50 459 9172



+971 4 251 6633



info@alumin.ae



www.alumin.ae



AL BURRAQ
Aluminium Works LLC